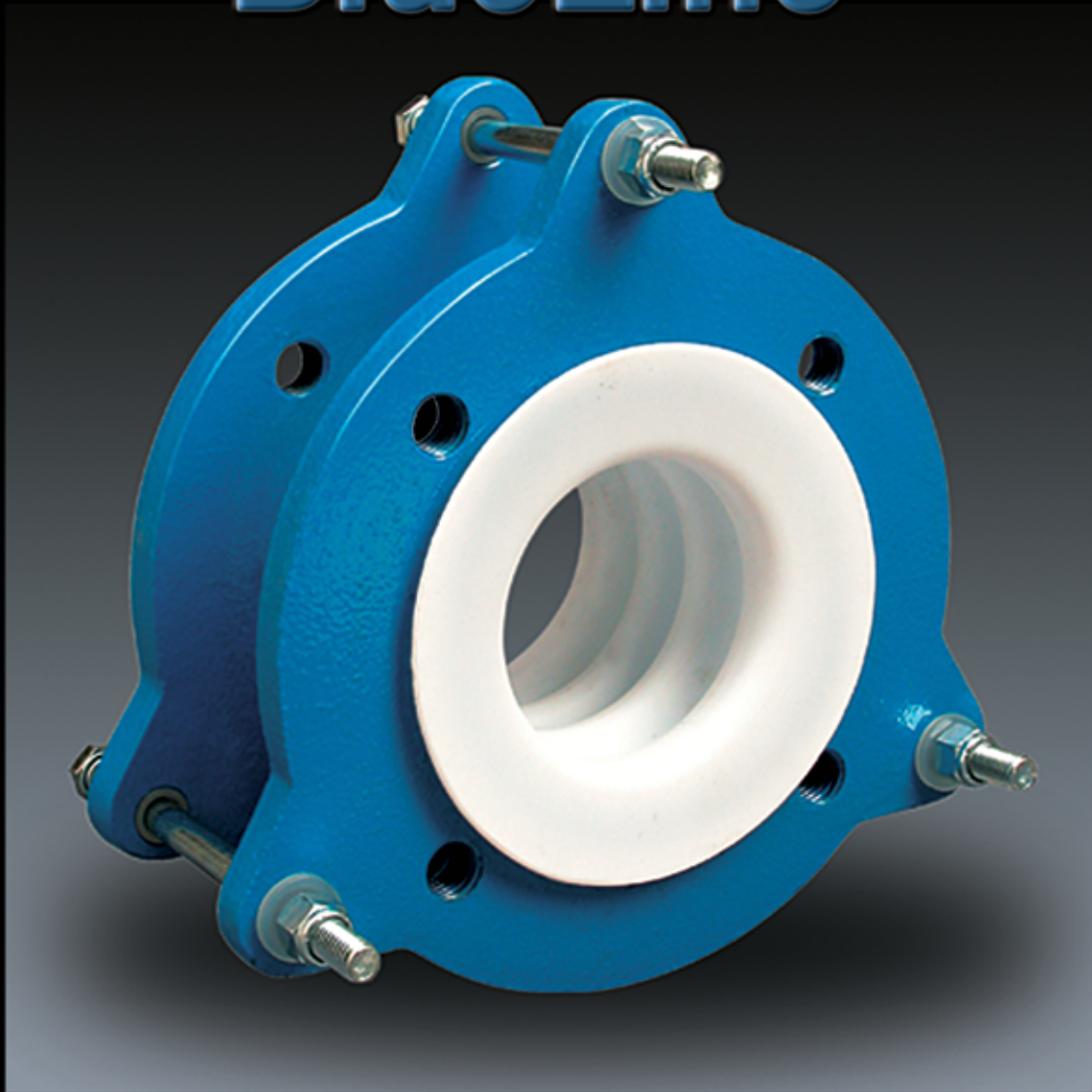


BlueLine™



PTFE Expansion Joints

PureFlex®
an ANDRONACO INDUSTRIES company

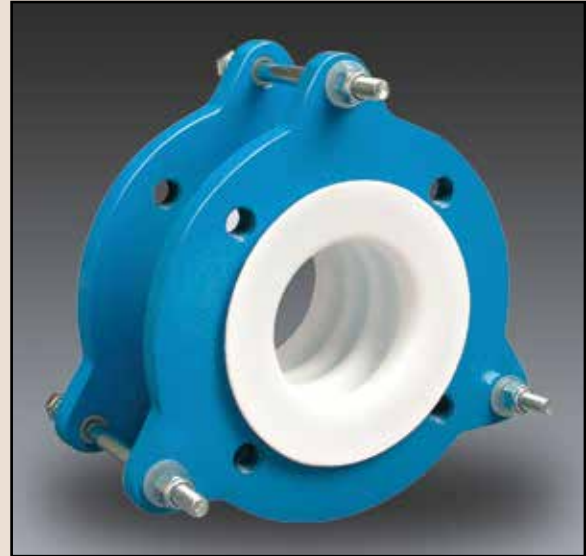
BlueLine™ Flexible Couplings, Expansion Joints and Bellows

Description

BlueLine flexible couplings, expansion joints and bellows are specifically designed to compensate for pipe expansion, vibration and misalignment in process piping and vessels. All **BlueLine** flexible couplings, expansion joints and bellows are constructed from uniform-walled isostatically molded PTFE and demonstrate a high level of design consistency throughout the product line. This consistency-not apparent in competitive products-is a result of an optimally designed convolution and a proprietary manufacturing process.

BlueLine flexible couplings, expansion joints and bellows offer a wide variety of benefits for maintenance and repair personnel including:

- Reliable protection for fragile FRP, carbon or glass equipment and nozzles.
- Superior corrosion resistance in acidic and caustic environments
- Heavy walls made from isostatically molded virgin PTFE
- Low spring rates with short face-to-face dimensions

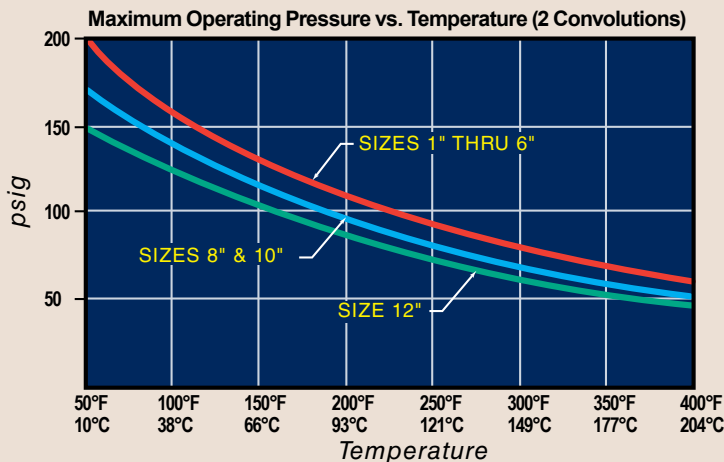
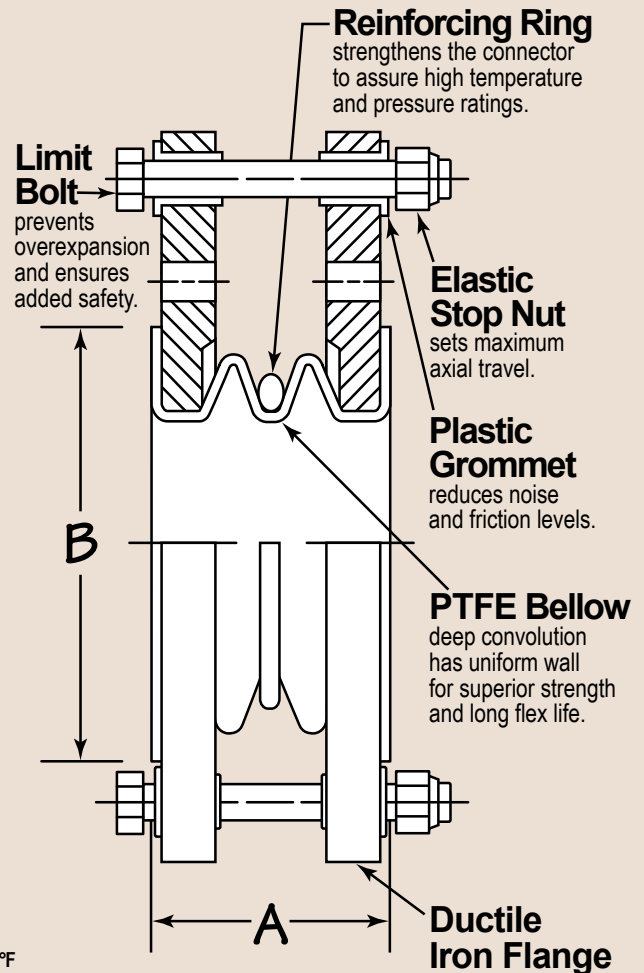


Flexible Couplings

BlueLine flexible couplings are two convolution connectors, available from 1" to 12" in diameter, that compensate for minor movement and are ideal for use in piping systems as vibration and sound insulators.

Flexible Couplings (2 Convolutions)

Nom. Size	Neutral Length A	Maximum Travel + or -	Flare Diameter B	Maximum Misalignment	Weight Lbs.
1"	1-5/16"	1/4"	2"	1/8"	2.6
1-1/2"	1-1/2"	1/4"	2-7/8"	1/8"	3.9
2"	1-7/8"	1/4"	3 5/8"	1/8"	7.8
2-1/2"	1-15/16"	5/16"	4-1/8"	1/8"	10.8
3"	2-7/16"	3/8"	5"	3/16"	13.1
4"	2-5/8"	1/2"	6-3/16"	1/4"	18.2
5"	3-1/16"	11/16"	7-5/16"	1/4"	22.4
6"	2-13/16"	1/2"	8-1/2"	1/4"	27.7
8"	3-11/16"	13/16"	10-5/8"	1/4"	41.0
10"	4"	1"	12-3/4"	1/4"	60.1
12"	4-1/8"	1"	15"	1/4"	89.7



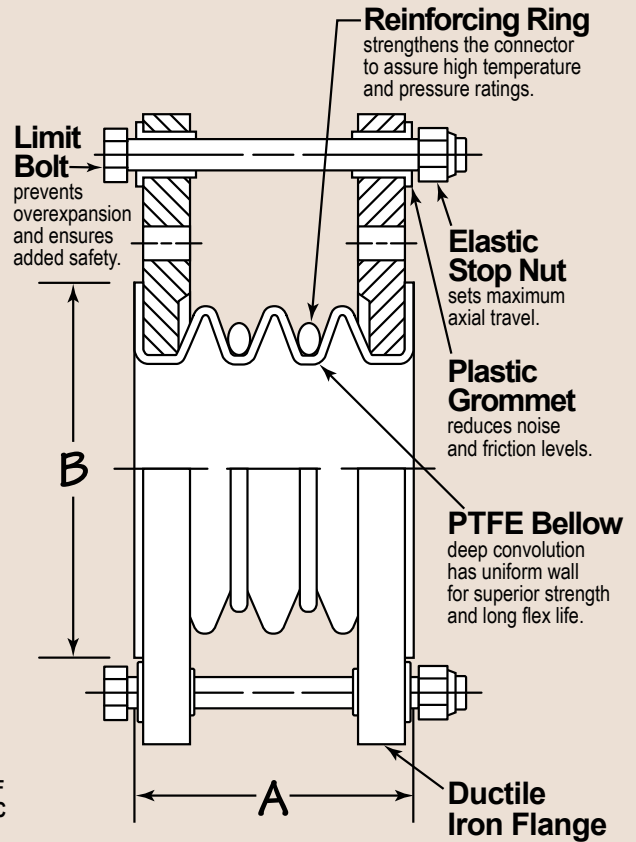
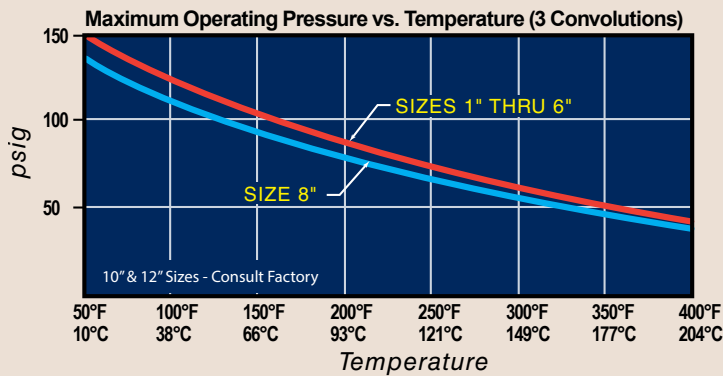
Expansion Joints

BlueLine expansion joints are three convolution connectors, available from 1" to 12" in diameter, that compensate for moderate movement or misalignment, have increased flexibility and can easily be installed in piping systems.

Expansion Joints (3 Convolutions)

Nom. Size	Neutral Length A	Maximum Travel + or -	Flare Diameter B	Maximum Misalignment	Weight Lbs.
1"	1-13/16"	1/2"	2"	1/4"	2.7
1-1/2"	2"	1/2"	2-7/8"	1/4"	4.1
2"	2-3/4"	3/4"	3-5/8"	3/8"	8.1
2-1/2"	3"	1"	4-1/8"	3/8"	11.2
3"	3-5/8"	1"	5"	1/2"	13.6
4"	3-3/4"	1-1/8"	6-3/16"	1/2"	18.9
5"	4"	1-1/8"	7-5/16"	1/2"	23.4
6"	4"	1-1/8"	8-1/2"	5/8"	29.1
8"	5-7/16"	1-11/16"	10-5/8"	5/8"	43.0

Also available in 10" and 12" sizes.



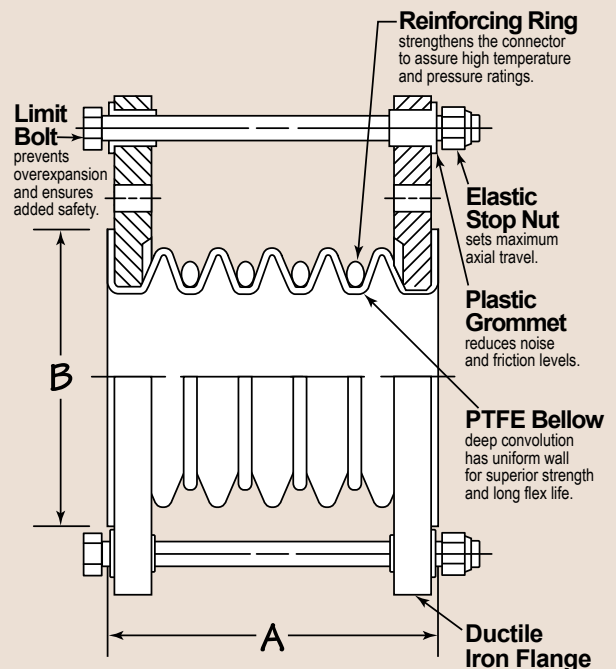
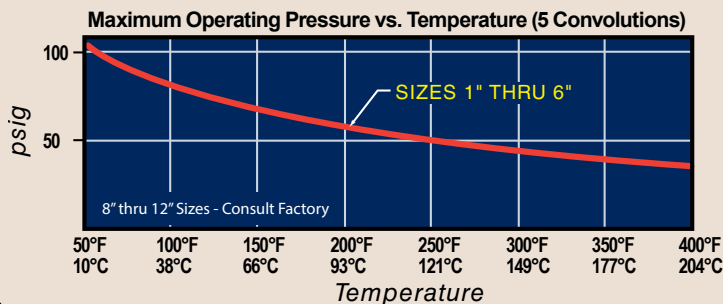
Bellows

BlueLine bellows are five convolution connectors, available from 1" to 12" in diameter, that compensate for extensive movement, misalignment and axial travel, have maximum flexibility and are ideal for use in weigh tank applications.

Bellows (5 Convolutions)

Nom. Size	Neutral Length A	Maximum Travel + or -	Flare Diameter B	Maximum Misalignment	Weight Lbs.
1"	2-11/16"	13/16"	2"	1/2"	2.9
1-1/2"	3-3/16"	1-1/16"	2-7/8"	1/2"	4.3
2"	3-15/16"	1-1/16"	3-5/8"	1/2"	8.7
3"	4-15/16"	1-1/16"	5"	1/2"	14.8
4"	5-3/16"	1-5/16"	6-3/16"	5/8"	20.4
6"	5-11/16"	1-9/16"	8-1/2"	5/8"	31.8

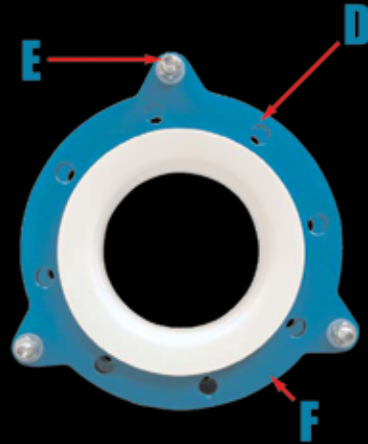
Also available in 8" thru 12" size.



BlueLine™ flanges are ductile iron, drilled and tapped per ANSI B16.5 for Class 150 piping systems. Limitbolts are zinc-plated steel mounted through plastic grommets.

DUCTILE IRON FLANGE DATA

Flange Size	D Class 150#			E Limit Bolt		F Flange	
	Holes	Thread	B.C.	Dia.	B.C.	Dia.	Thk.
1"	4	1/2-13	3-1/8"	1/4"	5-1/16"	4-1/4"	5/16"
1-1/2"	4	1/2-13	3-7/8"	1/4"	5-13/16"	5"	3/8"
2"	4	5/8-11	4-3/4"	3/8"	7-1/16"	6"	1/2"
2-1/2"	4	5/8-11	5-1/2"	3/8"	8-1/16"	7"	1/2"
3"	4	5/8-11	6"	3/8"	8-9/16"	7-1/2"	3/16"
4"	8	5/8-11	7-1/2"	3/8"	10-1/16"	9"	5/8"
5"	8	3/4-10	8-1/2"	1/2"	11-5/16"	10"	11/16"
6"	8	3/4-10	9-1/2"	1/2"	12-5/16"	11"	11/16"
8"	8	3/4-10	11-3/4"	1/2"	14-13/16"	13-1/2"	3/4"
10"	12	7/8-9	14-1/4"	5/8"	17-1/2"	16"	13/16"
12"	12	7/8-9	17"	5/8"	20-1/2"	19"	7/8"



BlueLine™ HP - High Purity PFA
(Note: PFA does not have the Flex-life of PTFE)

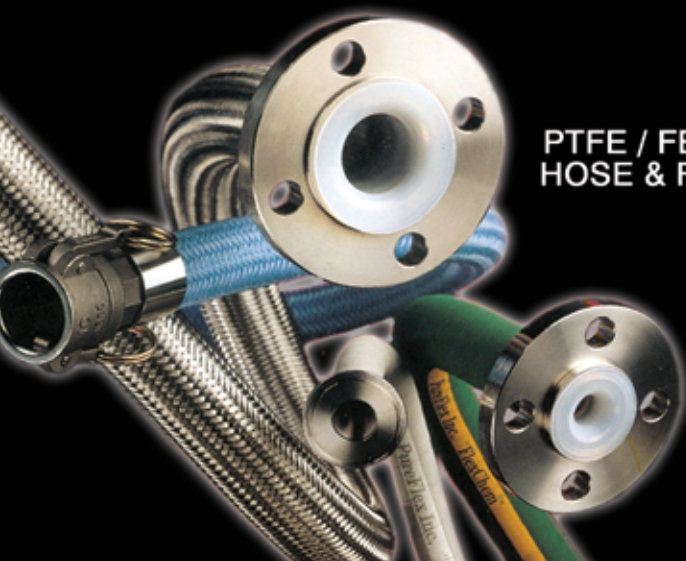
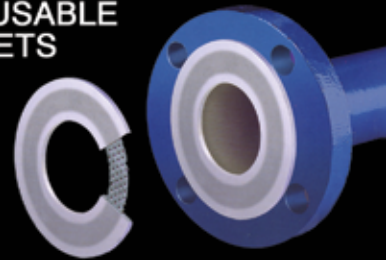
BlueLine™ PTFE flexible products can be used in full vacuum applications to the following Temperatures

Size	Flexible Coupling (2) Convolutions	Expansion Joint (3) Convolutions	Bellows (5) Convolutions
1"	450°F	450°F	425°F
1-1/2"	450°F	450°F	425°F
2"	450°F	450°F	425°F
2-1/2"	425°F	425°F	400°F
3"	425°F	425°F	350°F
4"	400°F	400°F	300°F
5"	400°F	350°F	250°F
6"	320°F	300°F	200°F
8"	250°F	200°F	150°F
10"	200°F	200°F	100°F
12"	150°F	120°F	CF

CF = Consult Factory



TASK-LINE® REUSABLE PTFE GASKETS



**PTFE / FEP / PFA
HOSE & FITTINGS**

PUREFLEX, INC. INFORMATION IS BASED ON TECHNICAL DATA AND TESTING THAT PUREFLEX BELIEVES TO BE RELIABLE AND IS SUBJECT TO CHANGE WITHOUT NOTICE. THE INFORMATION IS INTENDED FOR USE BY PERSONS HAVING TECHNICAL SKILL, AT THEIR OWN DISCRETION AND RISK. SINCE CONDITIONS OF PRODUCT ARE OUTSIDE OF PUREFLEX, INC CONTROL, PUREFLEX INC MAKES NO WARRANTIES, EXPRESS OR IMPLIED, AND ASSUMES NO LIABILITY IN CONNECTION WITH ANY USE OF THIS INFORMATION. PUREFLEX®, TASK-LINE® AND BLUELINE™ ARE TRADEMARKS OF PUREFLEX, INC.



4855 Broadmoor Ave. - Kentwood, MI 49512
Ph. 616.554-1100 Fax 616.554-3633
www.pureflex.com